

# SMD POWER INDUCTOR

ASPI-1306T



**RoHS**  
Compliant



18.5 x 15.2 x 7.1mm

## FEATURES:

- Low profile, compact size
- Large Terminal surface for good PCB bonding
- Low DCR, High Energy storage, suitable for large currents
- Ideal for a variety of DC-DC converter inductor applications

## APPLICATIONS:

- Portable communication equipment
- OA equipment
- LCD, DVD, modem, set-top box
- DC/DC converters

## ELECTRICAL SPECIFICATIONS:

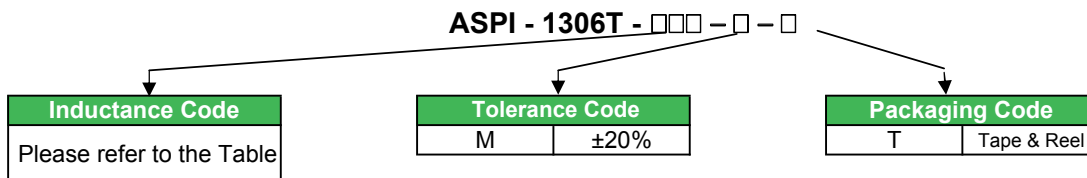
Abracon P/N:	ASPI-1306T-XXX
Operating Temperature:	-40°C to +85°C
Storage Temperature:	-40°C to +85°C, 70% RH max.
Measuring Conditions	Unless specified, test condition should be Temp.=15~35°C, Humidity=25~75%. If needed, then test condition should be Temp.=18~22°C, Humidity=60~70%.

Part Number	Inductance (µH)	DCR (Ω) Max	SRF (MHz) Max	Rated DC current (A)	
				Idc <sup>1</sup> , Max	Idc <sup>2</sup> , Max
ASPI-1306T-1R0M	1	0.009	80	20	8.6
ASPI-1306T-2R2M	2.2	0.014	80	16	7.1
ASPI-1306T-3R3M	3.3	0.015	60	14	6.2
ASPI-1306T-4R7M	4.7	0.018	60	13	6
ASPI-1306T-5R6M	5.6	0.02	40	12	5.3
ASPI-1306T-8R2M	8.2	0.029	30	10	4.8
ASPI-1306T-100M	10	0.031	30	10	4.3
ASPI-1306T-150M	15	0.036	22	8	4
ASPI-1306T-220M	22	0.047	20	7	3.5
ASPI-1306T-330M	33	0.066	15	5.5	3
ASPI-1306T-470M	47	0.086	9	4.5	2.6
ASPI-1306T-680M	68	0.13	8	3.5	2.3
ASPI-1306T-750M	75	0.152	8	3	2.3
ASPI-1306T-101M	100	0.19	7	3	1.8
ASPI-1306T-151M	150	0.25	6	2.6	1.5
ASPI-1306T-221M	220	0.38	5	2.4	1.2
ASPI-1306T-331M	330	0.56	4	1.9	1
ASPI-1306T-471M	470	0.85	3	1.4	0.82
ASPI-1306T-681M	680	1.1	2.5	1.2	0.72
ASPI-1306T-102M	1000	1.8	2	1	0.56

### Note

1. IDC 1 : Base on Inductance change ( |  $\Delta L/L_0$  |  $\leq$  10%),  $\Delta L=L(\text{IDC})-L_0$
2. IDC2 : Temperature Rise  $\Delta T=40^\circ\text{C}$
3. Test Freq.: 100KHz, 0.1V
4. Standard tolerance M= $\pm 20\%$

## OPTIONS AND PART IDENTIFICATION



# SMD POWER INDUCTOR

ASPI-1306T

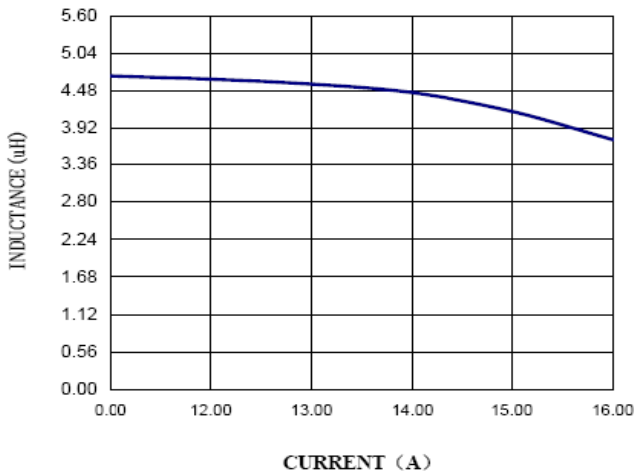


RoHS  
Compliant

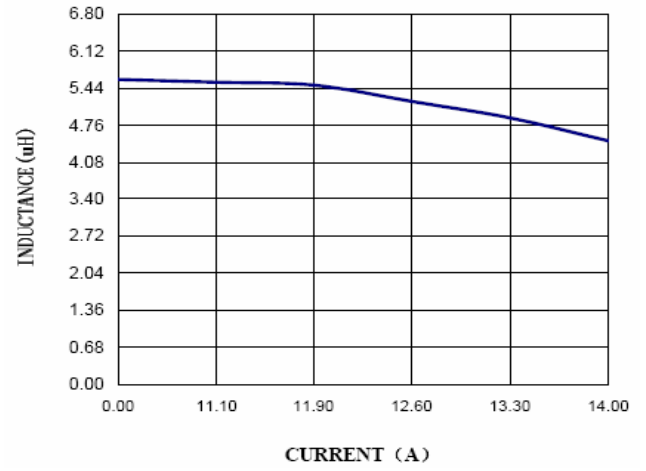


18.5 x 15.2 x 7.1mm

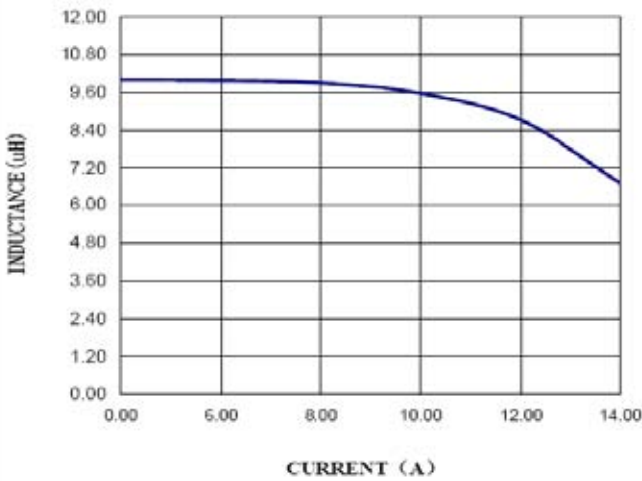
## ELECTRICAL SPECIFICATIONS CHARTS:



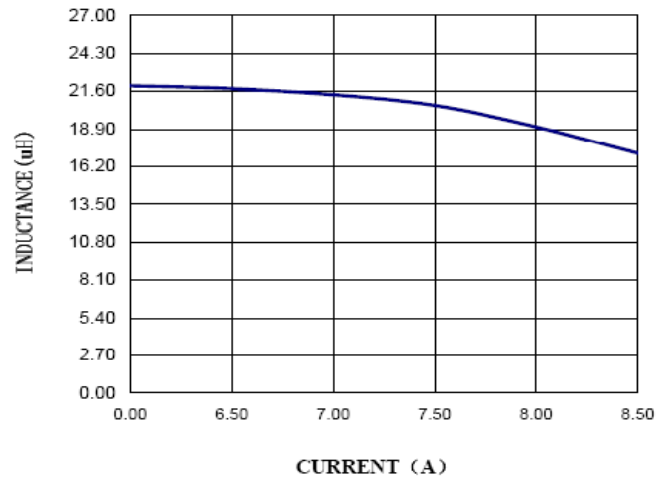
ASPI-1306T-4R7M



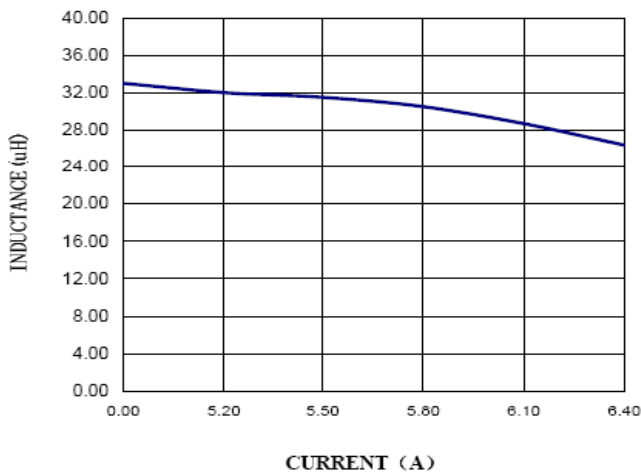
ASPI-1306T-5R6M



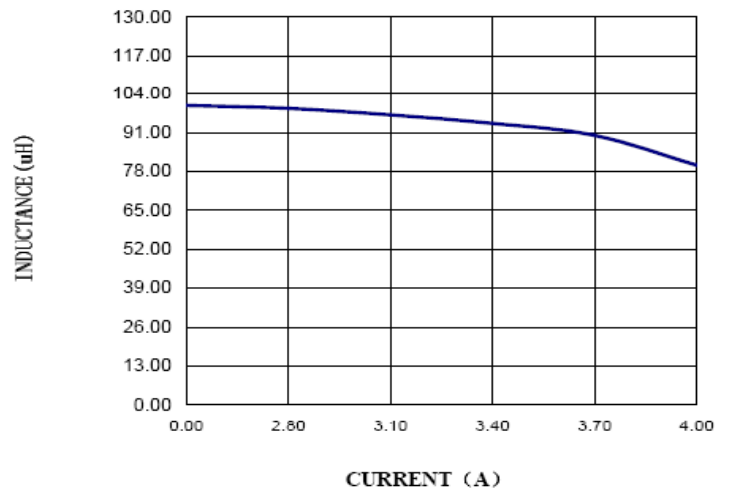
ASPI-1306T-100M



ASPI-1306T-220M



ASPI-1306T-330M



ASPI-1306T-101M

ABRACON IS  
ISO9001:2008  
CERTIFIED



**ABRACON**  
CORPORATION

Visit [www.abracon.com](http://www.abracon.com) for Terms & Conditions of Sale **Revised: 07.12.10**

30332 Esperanza, Rancho Santa Margarita, California 92688

tel 949-546-8000 | fax 949-546-8001 | [www.abracon.com](http://www.abracon.com)

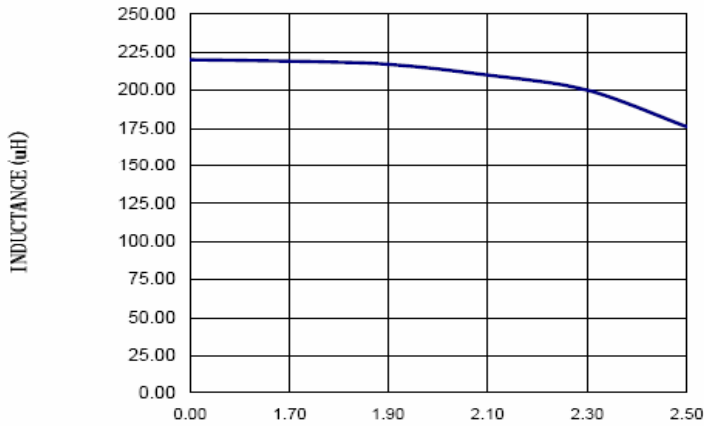
# SMD POWER INDUCTOR

ASPI-1306T

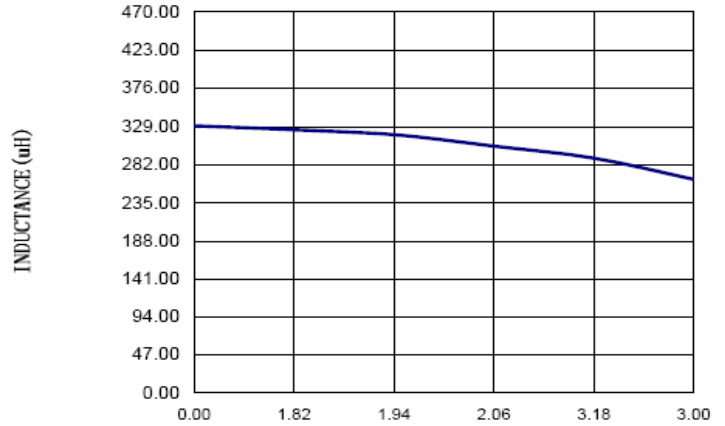


18.5 x 15.2 x 7.1mm

## ELECTRICAL SPECIFICATIONS CHARTS - continued:

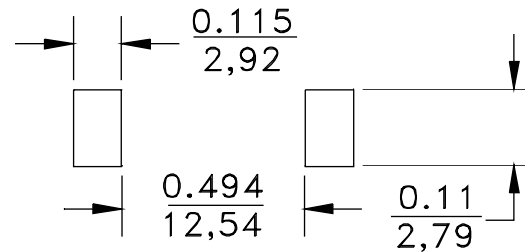
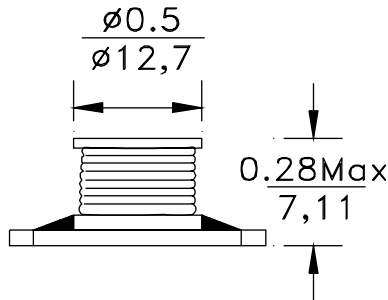
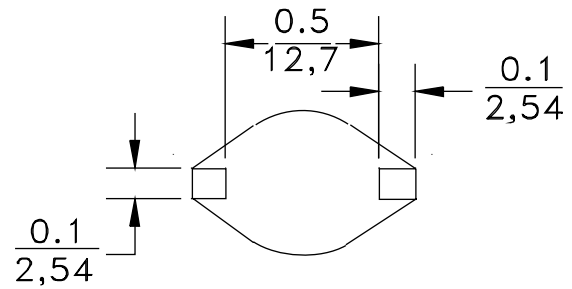
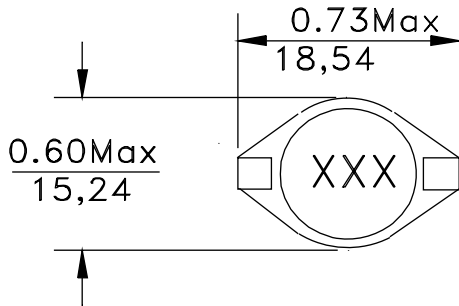


CURRENT (A)  
ASPI-1306T-221M



CURRENT (A)  
ASPI-1306T-331M

## OUTLINE DIMENSIONS:



Dimension : inch/mm (tolerance: +/-0.3 in mm)

# SMD POWER INDUCTOR

ASPI-1306T

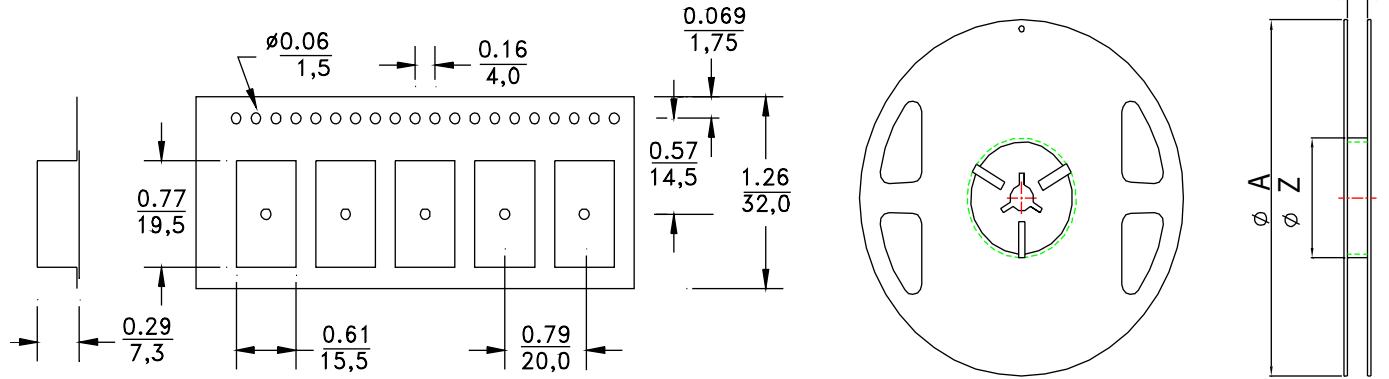


RoHS  
Compliant



18.5 x 15.2 x 7.1mm

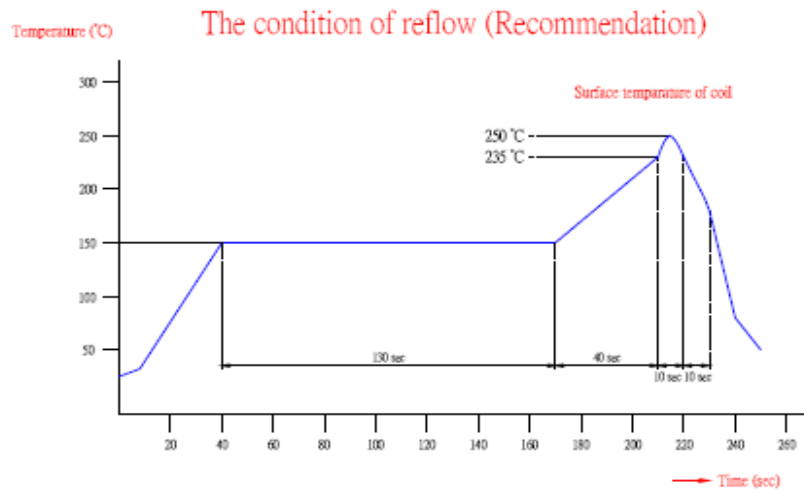
TAPE & REEL: T= tape and reel (800 pcs/reel)



series	A	C	Z
ASPI-1306T	330±2.0	32.5	100±1.0

Dimension : mm

REFLOW PROFILE:



The reflow condition recommended here is according to the machine used by our company. Big differences will arise as a result of the type of machine, reflow conditions, method, etc used. Hence, before setting up your reflow conditions. Please confirm with the above. Moreover, please clear all questions.

**ATTENTION:** Abracon Corporation's products are COTS – Commercial-Off-The-Shelf products; suitable for Commercial, Industrial and, where designated, Automotive Applications. Abracon's products are not specifically designed for Military, Aviation, Aerospace, Life-dependant Medical applications or any application requiring high reliability where component failure could result in loss of life and/or property. For applications requiring high reliability and/or presenting an extreme operating environment, written consent and authorization from Abracon Corporation is required. Please contact Abracon Corporation for more information.

ABRACON IS  
ISO9001:2008  
CERTIFIED



Visit [www.abracon.com](http://www.abracon.com) for Terms & Conditions of Sale **Revised: 07.12.10**  
30332 Esperanza, Rancho Santa Margarita, California 92688  
tel 949-546-8000 | fax 949-546-8001 | [www.abracon.com](http://www.abracon.com)