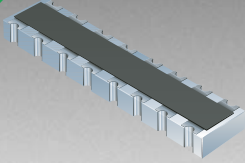


\*RoHS COMPLIANT



**BOURNS®**

## Features

- HIGH PERFORMANCE TERMINATION NETWORK
- Miniaturized circuitry and packaging for space reduction
- Designed for gigabit communication networks
- Controlled impedance
- RoHS compliant\*

## CAT16-PT4F4LF - Concave Chip Array

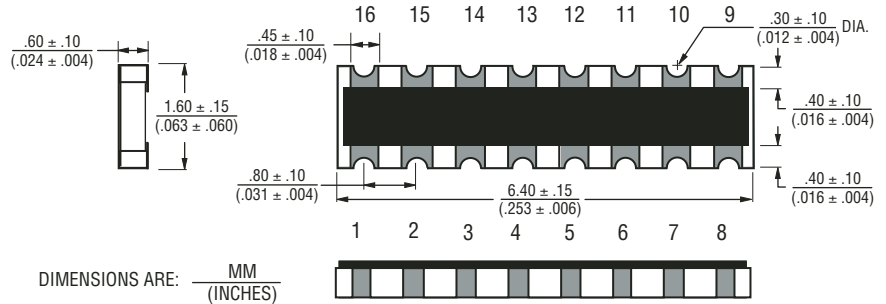
### Electrical Characteristics

Resistance

|                              |                   |
|------------------------------|-------------------|
| R1 .....                     | 100 ohms          |
| TCR .....                    | ±200 ppm/°C       |
| Temperature Range .....      | -55 °C to +125 °C |
| Max. Operating Voltage ..... | 5 VDC             |
| Max. Power Resistance .....  | .0625 W           |
| Solderability .....          | >95 % Coverage    |

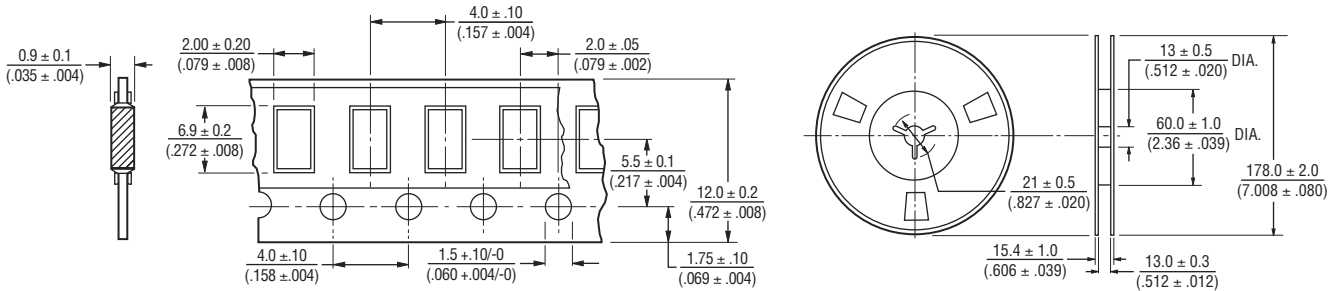
For Standard Values Used in Capacitors, Inductors, and Resistors, [click here](#).

### Product Dimensions

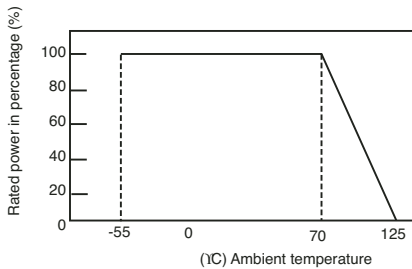


### Packaging Specifications

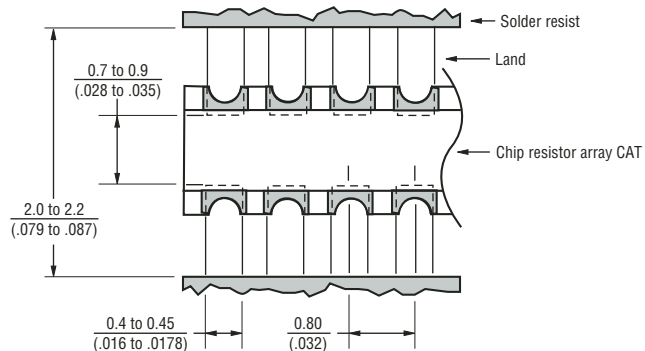
4000 pcs - per 7" reel



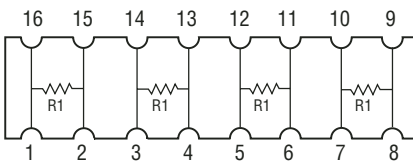
### Derating Curve



### Land Pattern



### Schematic



REV. 11/06

\*RoHS Directive 2002/95/EC Jan 27 2003 including Annex.  
Specifications are subject to change without notice.  
Customers should verify actual device performance in their specific applications.