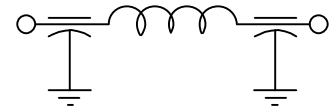


CAPACITANCE	3000 pF GMV
TEMP. RANGE	-55°C TO 125°C
CURRENT	10 AMP MAX.
DCR	.005 Ω MAX.
WORKING VOLTAGE	85°C 300 VDC 125°C 200 VDC
MIN. IL PER MIL-STD-220, 25°C, NO LOAD	
FREQ. (MHz)	dB
10	8
100	50
1GHz	70
10GHz	70

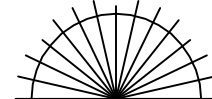
SCHEMATIC



MARKING:

PART: 89004
BAG: SCI-1289-004
XXXX DATE CODE
XXX QTY.
(200 PCS./BAG MAX.)

	5	4	3	REV. NO.	TOLERANCES UNLESS OTHERWISE SPECIFIED
	CN 202979	CN 181862	CN 180696	CHANGE NOTICE	Fractions ± 1/64
			REDRAWN		Dec. .xx ±
					Dec. .xxx ± .010
					Angles ± 0° 30'
					CODE IDENT. NO. DLSP2

 SPECTRUM CONTROL INC.		ERIE, FAIRVIEW PENNSYLVANIA
Dwn. SLAGLE	Description	
Ckd. 8/14/01	FILTER	
Apvd.	1289-004	
Scale NONE		